

# SCHEDULE OF PROPERTY

No.	Grantor	Grantee	Instru.	Date	Record	Cust'd No.
2	San Mateo Land Assoc	S.P.R.R.Co	B&S Deed	July 19, 1902	D.B. 93-476 Aug. 16, 1902	1406
3	Mary A. Clark	"	"	Aug 31, 1901	" 85-426 Sep. 3, 1901	1372
4	John M. Loane et al.	"	Condemnation	Jan. 6, 1902	" 92-146 Jan. 8, 1902	1392
5	Paul Admar et ux.	"	B&S Deed	Aug 7, 1901	" 85-374 Aug 8, 1901	1368
6	Mrs. Amelia M Vollers	"	"	July 29, 1901	" 85-358 July 31, 1901	1366
7	John H. Herbst et al.	"	"	Aug. 2, 1901	" 88-579 Aug 7, 1901	1367
8	Frances A. Bailey	"	"	July 23, 1901	" 85-348 July 25, 1901	1365
9	L. H. Fuller et ux.	"	"	July 20, 1901	" 88-551 Aug 1, 1901	1363
10	L. H. Fuller et ux.	"	"	July 26, 1902	" 93-456 Aug 8, 1902	1409
11	Jeremiah Sullivan et ux.	"	"	July 28, 1902	" 93-458 Aug 8, 1902	1413
12	John S. Belchor et ux.	"	"	July 26, 1902	" 93-446 Aug 8, 1902	1410
13	Henry Bastor et ux.	"	"	July 28, 1902	" 93-450 Aug 8, 1902	1412
14	John Colletta et ux.	"	"	July 28, 1902	" 93-454 Aug 8, 1902	1411
15	Michael Casey	"	"	July 26, 1902	" 93-452 Aug 8, 1902	1408
16	Geo W. Shields	"	"	July 26, 1902	" 93-460 Aug 8, 1902	1407
17	Mary & John H. Bruns	"	"	July 30, 1902	" 93-448 Aug 8, 1902	1414
18	C. B. Polhemus	S.F. & S.J.R.R.Co.	"	May 28, 1862	" 3-170 June 2, 1862	1276
19	County of San Mateo	S.P.R.R.Co.	Vacation	Oct. 4, 1880	"	Fran. 506
20	Henry M. Newhall et al.	Contract & Finance Co.	B&S Deed	Jan. 4, 1873	" 19-61 Mch. 18, 1873	With 1328
	Contract & Finance Co.	Chas. Crocker	G.&C Deed	Oct. 26, 1875	" 25-551 Dec. 22, 1875	With 1328
	Pacific Improvement Co.	Southern Pac. R.R.Co.	Warranty Deed	Dec. 11, 1891	" 58-317 Dec. 14, 1891	1328

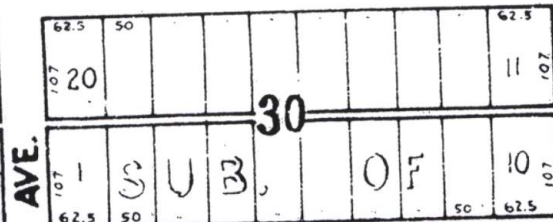
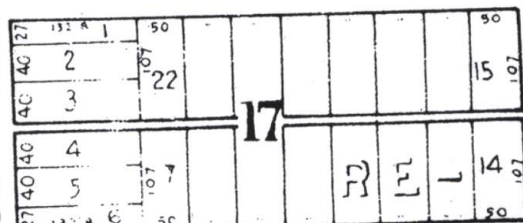
Note No. 1: San Francisco & San Jose Railroad Co. consolidated with Southern Pacific Railroad Co. Oct. 12, 1870.

Note No. 2: County reserves right of Public to cross at intersecting Avenues.

Note No. 15: 0.138 acs. disposed of, shown hatched, by deed 56510 (letter "R"), 0.30 ac. by deed 63685 (It

P.U.C. # E-18.30

9th AVE.



EAST

355+6865 B.C.S. 055293